

# The Drovers Solar Farm

---

## **Statutory Ecology and Nature Conservation Features Plan**

Prepared by: LDA Design

Date: November 2025

PINS reference: EN0110013

Document reference: APP/2.7 (Original)

APFP Regulation Reg 5(2)(I)

Planning Act 2008

Infrastructure Planning (Applications: Prescribed Forms and Procedure) Regulations 2009

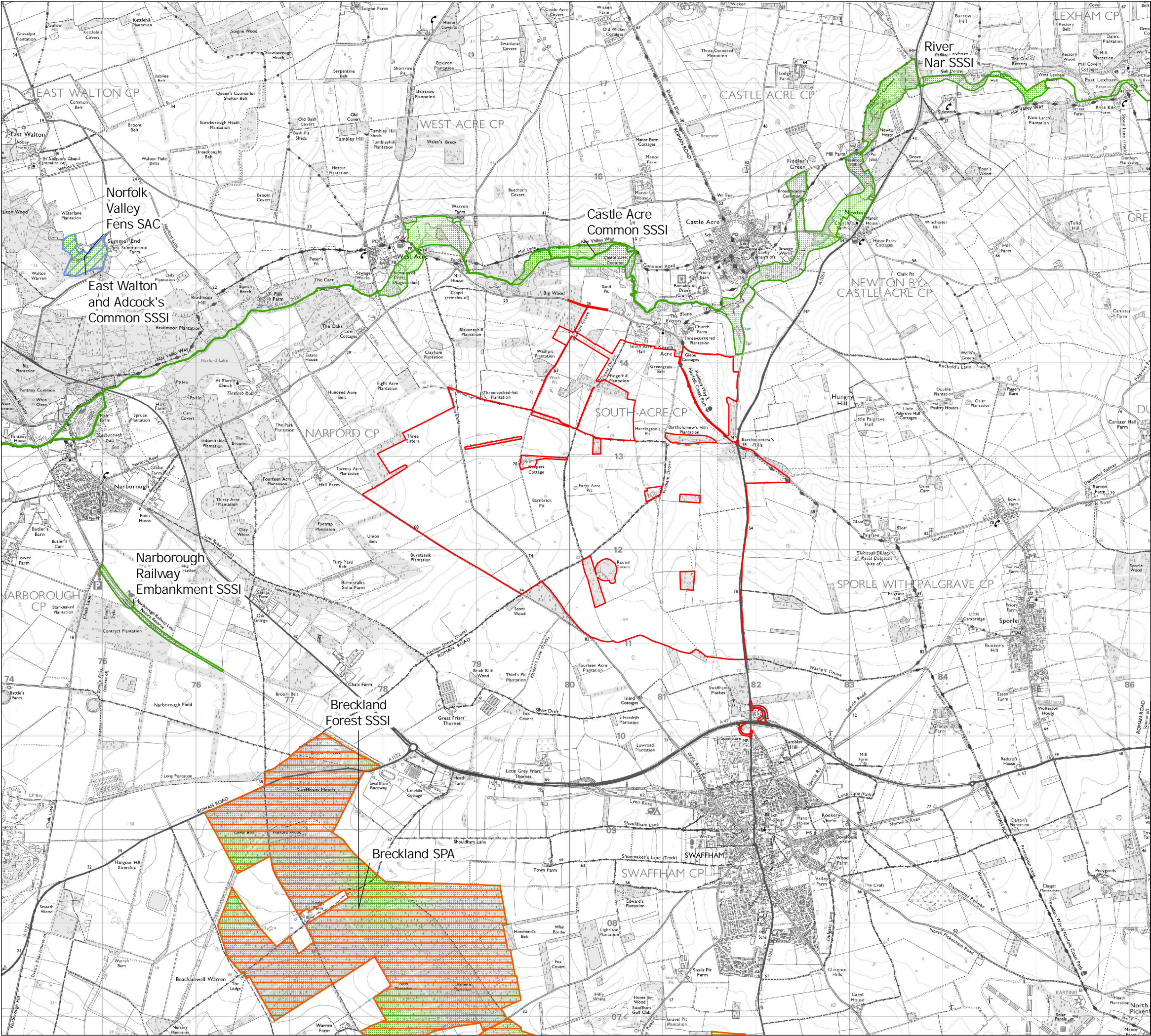




## 2.7 Statutory Ecology and Nature Conservation Features Plan

Drawing Number	Revision Number	Drawing Title	Scale
9485_0449	P0	Statutory Ecology and Nature Conservation Features Plan	1:40,000 @ A3



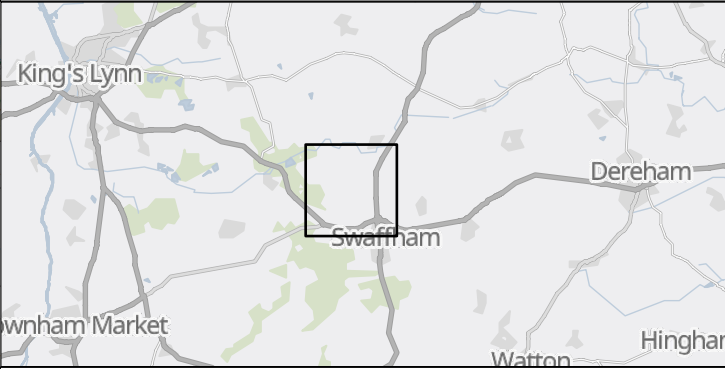


DRAWING TITLE:  
**Statutory Ecology and Nature Conservation Features Plan**

DOCUMENT:  
**2.7 Statutory Ecology and Nature Conservation Features Plan**

- LEGEND:
- Order limits
  - Site of Special Scientific Interest (SSSI)
  - Special Area of Conservation (SAC)
  - Special Protection Area (SPA)

\*Note - No dimensions are to be scaled from this drawing. All dimensions are to be checked on site. A rea measurements for indicative purposes only.  
Sources: Natural England, LDA Design, IGP 2025



The Infrastructure Planning (Applications: Prescribed Forms and Procedure) Regulations 2009 – Reg 5(2)(l)

PINS Ref. EN 0110013 Drawing no.: 9485\_0449

DATE	Nov 2025	DRAWN	EC
SCALE @A 3	1:40,000	CHECKED	PD
STATUS	Final	APPROVED	RP

P0	DCO Submission	RP	19/11/2025
REV.	DESCRIPTION	APP.	DATE

THIS DRAWING IS THE PROPERTY OF ISLAND GREEN POWER AND NO REPRODUCTION MAY BE MADE IN WHOLE OR IN PART WITHOUT PERMISSION

